

Outcomes with ponatinib in patients with chronic-phase chronic myeloid leukemia and the T315I mutation: 4-year results from the OPTIC trial

Jane Apperley, MD,¹ Michael Deininger, MD, PhD,² Christopher Kevin Arthur, MD,³ Charles Chuah, MD,⁴ Andreas Hochhaus, Dr. med.,⁵ Hugues de Lavallade, MD, PhD,⁶ Jeffrey Lipton, MD, PhD,⁷ Elza Lomaia, MD, PhD,⁸ James McCloskey, MD,⁹ Lori Maness, MD,¹⁰ Michael Mauro, MD,¹¹ Beatriz Moraghi, MD,¹² Carolina Pavlovsky, MD,¹³ Gianantonio Rosti, MD,¹⁴ Philippe Rousselot, MD, PhD,¹⁵ Maria Undurraga Sutton, MD,¹⁶ Xiaowei Ren, PhD,¹⁷ Alexander Vorog, MD,¹⁷ Hagop Kantarjian, MD,¹⁸ Jorge Cortes, MD¹⁹

¹Imperial College London, London, UK; ²Versiti Blood Research Institute, Milwaukee, WI, USA; ³Royal North Shore Hospital, St. Leonards, Australia; ⁴Singapore General Hospital, Duke-NUS Medical School, Singapore; ⁵Universitätsklinikum Jena, Jena, Germany; ⁶King's College Hospital NHS Foundation, London, UK; ⁷Princess Margaret Cancer Centre, Toronto, Ontario, Canada; ⁸Almazov National Medical Research Centre, St. Petersburg, Russia; ⁹The John Theurer Cancer Center at Hackensack Meridian Health, Hackensack, NJ, USA; ¹⁰University of Nebraska Medical Center, Omaha, NE, USA; ¹¹Memorial Sloan Kettering, New York, NY, USA; ¹²Hospital Jose Maria Ramos Mejia, Buenos Aires, Argentina; ¹³Fundaleu, Buenos Aires, Argentina; ¹⁴IRCCS Istituto Romagnolo per lo Studio dei Tumori (IRST) "Dino Amadori", Meldola (FC), Italy; ¹⁵Centre Hospitalier de Versailles University de Versailles Saint-Quentin-en-Yvelines, Paris, France; ¹⁶Hospital del Salvador, Santiago, Chile; ¹⁷Takeda Development Center Americas, Inc., Lexington, MA, USA; ¹⁸The University of Texas MD Anderson Cancer Center, Houston, TX, USA; ¹⁹Georgia Cancer Center at Augusta University, Augusta, GA, USA

Disclosures

Jane Apperley

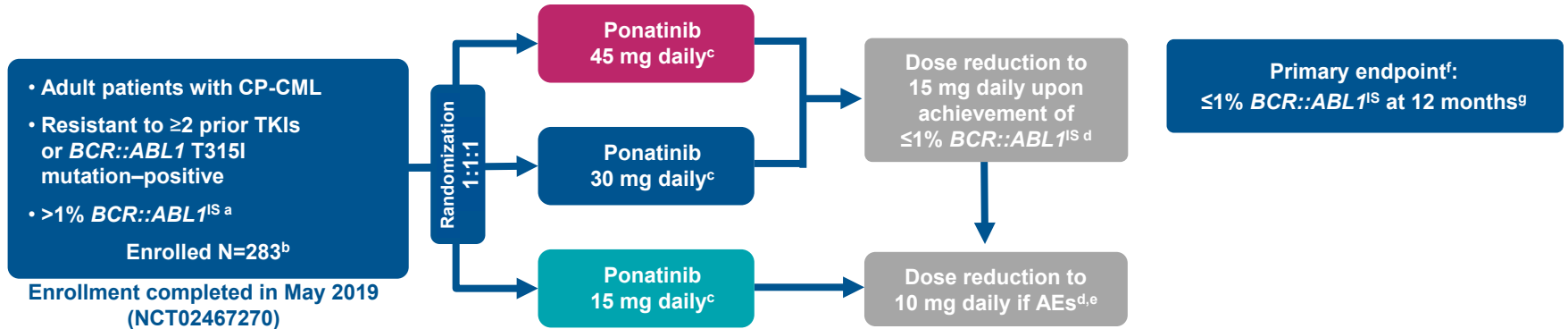
- Honoraria, research funding, and speakers bureau: Incyte, Pfizer
- Honoraria and speakers bureau: Incyte, Novartis
- Advisory boards: Novartis, Ascentage Pharma Group, Terns

Background

- Resistance to first- and second-generation BCR::ABL1 tyrosine kinase inhibitors (TKIs) often develops in patients with chronic-phase chronic myeloid leukemia with the *BCR::ABL1* T315I mutation, leading to poor survival¹⁻³
- Ponatinib is the only approved BCR::ABL1 TKI that potently inhibits native *BCR::ABL1* and all known single-resistance mutants, including T315I^{2,3}
- OPTIC (Optimizing Ponatinib Treatment in CP-CML, NCT02467270) is a phase 2 trial assessing the efficacy and safety of response-based ponatinib dosing in patients with CP-CML whose disease is resistant to ≥ 2 TKIs or who harbor T315I¹
- Results from the OPTIC primary analysis demonstrated robust efficacy in the overall CP-CML population and in patients with the T315I mutation¹
- In this post hoc analysis, we present the 4-year results from the OPTIC trial in patients with the T315I mutation

Study design

OPTIC is an ongoing multicenter randomized phase 2 trial



- This subanalysis assessed 4-year *BCR::ABL1*^{IS} response rates, progression-free survival (PFS), overall survival (OS), and safety in patients with the T315I mutation
- At the data cutoff for the 4-year analysis (May 8, 2023), median follow-up in patients with the T315I mutation was 60.6, 63.5, and 60.7 months in the 45-mg, 30-mg, and 15-mg cohorts, respectively

^aAs shown by quantitative real-time polymerase chain reaction; ^b99% of patients were TKI-resistant; ^cDose reductions due to AEs were permitted; ^dEscalation to the starting dose was allowed for patients who lost their response following dose reduction; no dose escalation was allowed beyond starting dose; ^eDose reduction below ponatinib 10 mg was not permitted during the main treatment period, but reduced dosing frequency was permitted during the treatment continuation period; ^fKey secondary endpoints: MMR rate at 12 months and 24 months and MCyR rate by 12 months, duration of MMR, and safety across the 3 doses; others include PFS, OS, and DOR in responders; ^gStatistical analysis: n≥92 patients/cohort distinguished a favorable ≤1% *BCR::ABL1*^{IS} rate of 35% from a null or uninteresting rate of 20% with a nominal 80% power and 1-sided type I error rate of 0.0083 (exact binomial test).

AE, adverse event; DOR, duration of response; MCyR, major cytogenetic response; MMR, major molecular response

Demographics and baseline disease characteristics^a

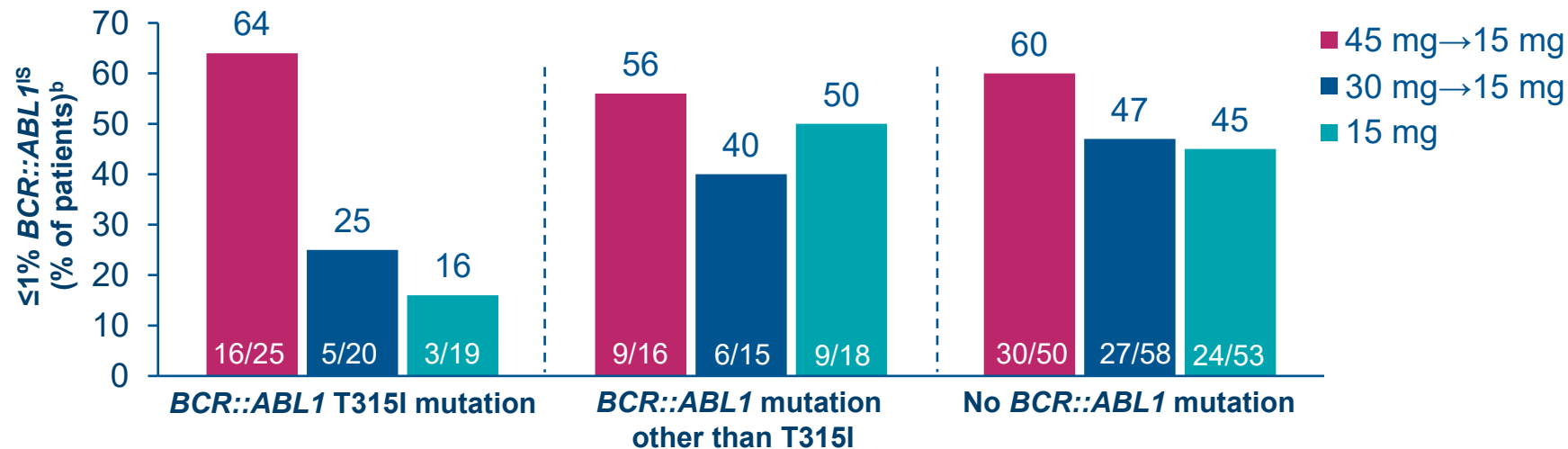
Characteristic	Subcategory	45 mg→15 mg (n=94)	30 mg→15 mg (n=95)	15 mg (n=94)
Age, years, median (range)		46 (19–81)	51 (21–77)	49 (18–81)
Male, n (%)		50 (53)	38 (40)	53 (56)
ECOG PS 0 or 1, n (%)		93 (99)	93 (99)	94 (100)
Time since diagnosis, years, median (range)		5.5 (1–21)	5.1 (1–29)	5.7 (1–22)
Patients with CV risk factors, n (%)	Arterial hypertension	26 (28)	25 (27)	22 (23)
	Diabetes mellitus	5 (5)	3 (3)	7 (7)
	Hyperlipidemia	19 (20)	14 (15)	16 (17)
Patients with ≥2 CV risk factors, n (%)		5 (5)	4 (4)	3 (3)
Prior TKIs, n (%)	1	1 (1)	1 (1)	4 (4)
	2	43 (46)	37 (39)	42 (45)
	≥3	50 (53)	56 (60)	48 (51)
Stopped prior TKI for resistance, n (%)		92 (98)	94 (100)	94 (100)
<i>BCR::ABL1</i> mutation, ^b n (%)	No mutation	51 (54)	58 (62)	54 (57)
	T315I mutation	25 (27)	21 (22)	21 (22)
	Other mutations	16 (17)	14 (15)	18 (19)
Best response to last prior TKI, n (%)	CHR or worse	61 (65)	55 (59)	57 (61)
	≤1% <i>BCR::ABL1</i> ^{IS} or better	2 (2)	7 (7)	7 (7)

- At 48 months, 22, 18, and 65 patients remained on treatment in the T315I, other mutation, and no mutation cohorts, respectively

^aSafety population. ^bFive patients (45 mg, n=2; 30 mg, n=1; 15 mg, n=2) did not have mutation testing performed at baseline.

CHR, complete hematologic response; CV, cardiovascular; ECOG, Eastern Cooperative Oncology Group; PS, performance status

≤1% *BCR::ABL1*^{IS} (MR2) response rate by 48 months was highest in the 45-mg cohort^a

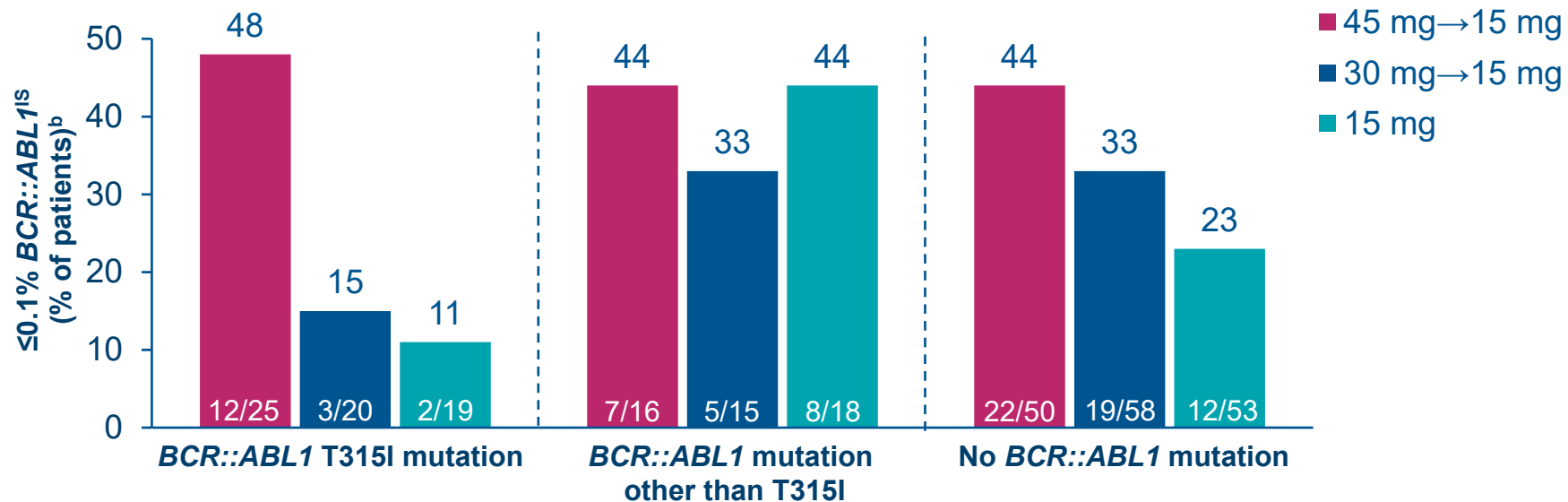


- The difference in response between dosing cohorts was highest for patients with T315I

^aAnalysis conducted in the ITT population; ^bNumber of patients with ≤1% *BCR::ABL1*^{IS} is counted on cumulative basis by each time point, and a patient with response is counted only once. Percentages are based on the number of patients in each cohort as denominator.

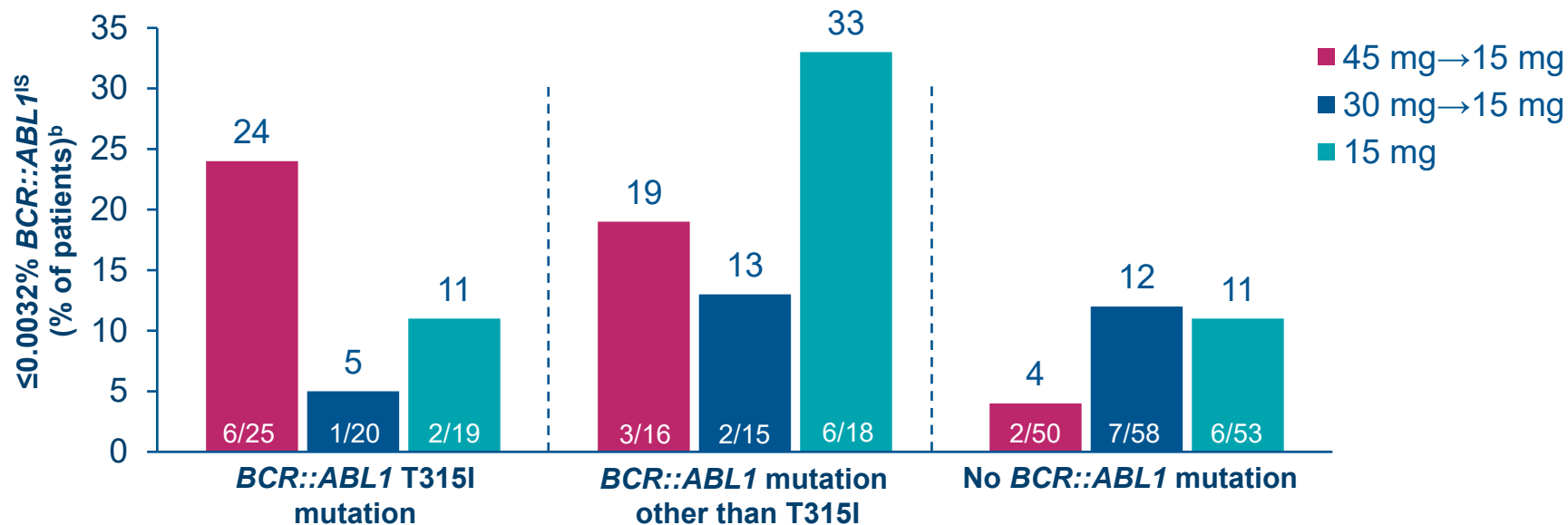
ITT, intent-to-treat

≤0.1% *BCR::ABL1*^{IS} (MMR) response rate by 48 months for the 45-mg cohort was highest in patients with the T315I mutation^a



- The difference in response between dosing cohorts was highest for patients with T315I

$\leq 0.0032\%$ *BCR::ABL1*^{IS} (MR4.5) response rate by 48 months was highest in patients with the T315I mutation for the 45-mg cohort^a

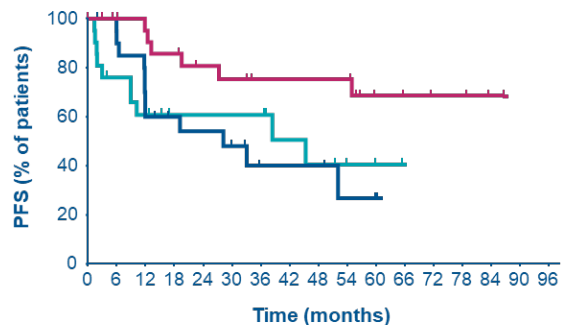


^aAnalysis conducted in the ITT population; ^bNumber of patients with $\leq 0.0032\%$ *BCR::ABL1*^{IS} is counted on cumulative basis by each time point, and a patient with response is counted only once. Percentages are based on the number of patients in each cohort as denominator.

In the 45-mg cohort, median PFS was not reached in patients with the T315I mutation or those with no *BCR::ABL1* mutation

BCR::ABL1 T315I mutation

	No. (%) of patients with events	Median PFS, months (95% CI)	4-year PFS, % (95% CI)
45 mg → 15 mg (n=25)	6 (24)	NE (55.2–NE)	75 (50–89)
30 mg → 15 mg (n=21)	12 (57)	28.4 (12.0–NE)	40 (17–62)
15 mg (n=21)	10 (48)	45.6 (9.0–NE)	41 (15–65)

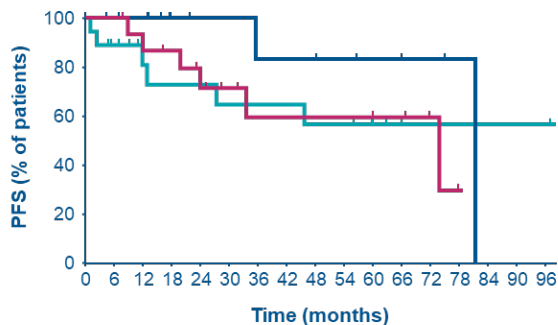


No. at risk

45 mg → 15 mg	25	22	20	18	15	14	12	12	12	12	7	6	3	3	1	0
30 mg → 15 mg	21	20	14	10	9	8	4	4	4	2	2	0				
15 mg	21	15	12	8	8	8	8	5	4	3	2	0				

BCR::ABL1 mutation other than T315I

	No. (%) of patients with events	Median PFS, months (95% CI)	4-year PFS, % (95% CI)
45 mg → 15 mg (n=16)	6 (38)	74.1 (19.9–NE)	60 (26–82)
30 mg → 15 mg (n=15)	2 (13)	81.5 (35.6–NE)	83 (27–98)
15 mg (n=18)	6 (33)	NE (13.0–NE)	57 (27–78)

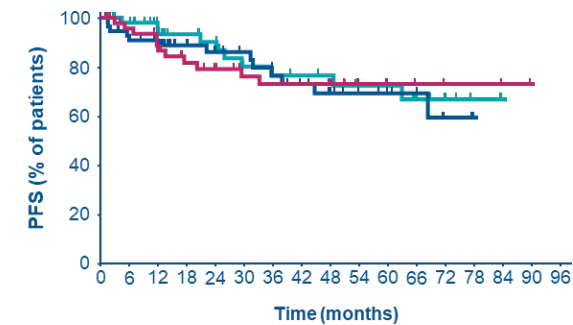


No. at risk

45 mg → 15 mg	16	16	14	12	10	7	5	5	5	5	4	2	1	0		
30 mg → 15 mg	15	13	12	7	6	6	5	5	5	4	3	3	2	1	1	
15 mg	18	14	10	9	9	8	8	8	7	7	4	2	1	1	1	1

No *BCR::ABL1* mutation

	No. (%) of patients with events	Median PFS, months (95% CI)	4-year PFS, % (95% CI)
45 mg → 15 mg (n=51)	11 (21)	NE (NE–NE)	73 (56–84)
30 mg → 15 mg (n=58)	13 (22)	NE (68.8–NE)	69 (51–82)
15 mg (n=54)	10 (19)	NE (63.2–NE)	77 (58–88)



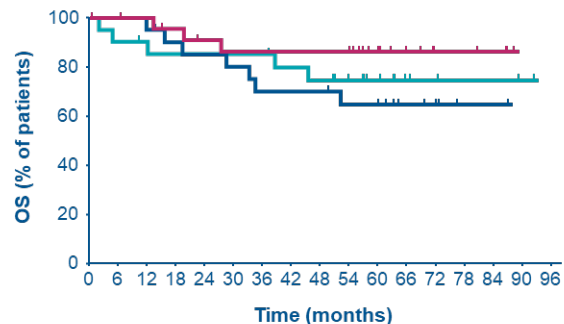
No. at risk

45 mg → 15 mg	51	44	39	32	30	25	24	23	21	17	12	8	6	2	2	1	0
30 mg → 15 mg	58	49	46	34	31	27	23	20	17	12	10	8	5	3	0		
15 mg	54	50	42	32	29	24	21	20	19	16	13	11	7	2	1		

Median OS was not reached at the 4-year analysis regardless of mutation status across all dosing cohorts

BCR::ABL1 T315I mutation

	No. (%) of patients with events	Median OS, months (95% CI)	4-year OS, % (95% CI)
45 mg→15 mg (n=25)	3 (12)	NE (NE–NE)	86 (63–95)
30 mg→15 mg (n=21)	7 (33)	NE (34.6–NE)	70 (45–85)
15 mg (n=21)	5 (24)	NE (45.6–NE)	75 (50–89)

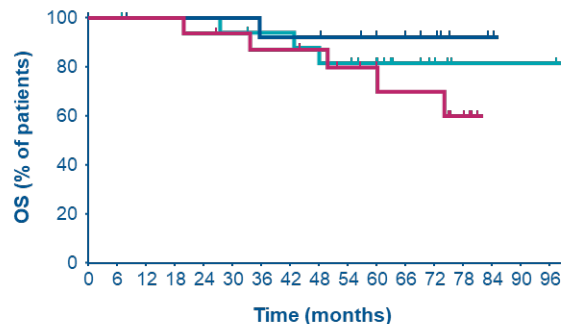


No. at risk

45 mg→15 mg	25	24	23	21	19	18	18	18	18	18	12	8	5	5	4	0
30 mg→15 mg	21	21	20	18	17	16	14	14	14	11	11	5	4	1	1	0
15 mg	21	19	18	17	17	17	15	14	12	8	4	3	2	2	1	0

BCR::ABL1 mutation other than T315I

	No. (%) of patients with events	Median OS, months (95% CI)	4-year OS, % (95% CI)
45 mg→15 mg (n=16)	5 (31)	NE (49.8–NE)	87 (57–97)
30 mg→15 mg (n=15)	1 (7)	NE (NE–NE)	92 (57–99)
15 mg (n=18)	3 (17)	NE (NE–NE)	82 (53–94)

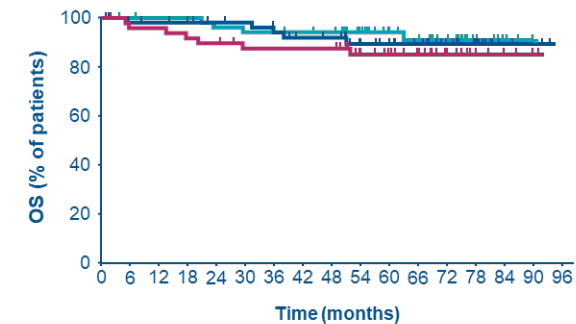


No. at risk

45 mg→15 mg	16	16	16	16	15	14	13	13	12	10	9	7	7	4	0	
30 mg→15 mg	15	14	13	13	13	13	12	12	12	11	9	8	5	2	1	0
15 mg	18	18	17	17	17	16	15	15	14	13	10	6	4	1	1	1

No BCR::ABL1 mutation

	No. (%) of patients with events	Median OS, months (95% CI)	4-year OS, % (95% CI)
45 mg→15 mg (n=51)	7 (14)	NE (NE–NE)	88 (75–94)
30 mg→15 mg (n=58)	5 (9)	NE (NE–NE)	92 (80–97)
15 mg (n=54)	4 (7)	NE (NE–NE)	94 (83–98)



No. at risk

45 mg→15 mg	51	47	47	45	44	41	41	41	41	32	27	21	13	6	4	2	0
30 mg→15 mg	58	55	54	53	49	48	45	42	41	33	29	25	19	13	3	2	0
15 mg	54	53	52	52	49	48	48	47	46	39	30	27	21	10	4	1	0

Dose reductions for efficacy and re-escalations after loss of response were successful in maintaining $\leq 1\%$ *BCR::ABL*^{1S}_{a,b}

Characteristic	T315I mutation	
	45 mg→ 15 mg (n=25)	30 mg→15 mg (n=20)
Achieved $\leq 1\%$ <i>BCR::ABL</i> ^{1S} at any time, n (%)	16 (64)	5 (25)
Dose reduced for efficacy, n (%)	15 (94)	5 (100)
Maintained response, n (%)	7 (47)	2 (40)
Loss of $\leq 1\%$ <i>BCR::ABL</i> ^{1S} at any time, n (%)	9 ^c (60)	3 (60)
Dose re-escalated after loss of response, n (%)	8 (89)	2 (67)
Regained $\leq 1\%$ <i>BCR::ABL</i> ^{1S} after re-escalation		
Yes	6 (75)	1 (50)
No	2 (25)	1 (50)

- Of the patients who achieved response at any time but subsequently lost response, most regained $\leq 1\%$ *BCR::ABL*^{1S} after dose re-escalation

^aIncludes all patients who had the first dose reduction to 15 mg occur after $\leq 1\%$ *BCR::ABL*^{1S} achieved; ^bITT population; ^cOne patient did not have dose a reduction to 15 mg upon achieving $\leq 1\%$ *BCR::ABL*^{1S}; this patient lost response after achieving $\leq 1\%$ *BCR::ABL*^{1S}.

TEAEs and dose modifications were comparable across dosing cohorts in patients with the T315I mutation

TEAEs	T315I mutation		
	45 mg→ 15 mg (n=25)	30 mg→ 15 mg (n=21)	15 mg (n=21)
TEAEs, n (%)			
Any TEAE	25 (100)	20 (95)	20 (95)
Grade 3–4	13 (52)	7 (33)	6 (29)
Serious	9 (36)	7 (33)	6 (29)
Grade 5 ^a	2 (8)	1 (5)	2 (10)
Dose modification for TEAEs, n (%)			
Discontinuation ^b	2 (8)	3 (14)	1 (5)
Reduction	12 (48)	5 (24)	1 (5)
Interruption	16 (64)	10 (48)	8 (38)

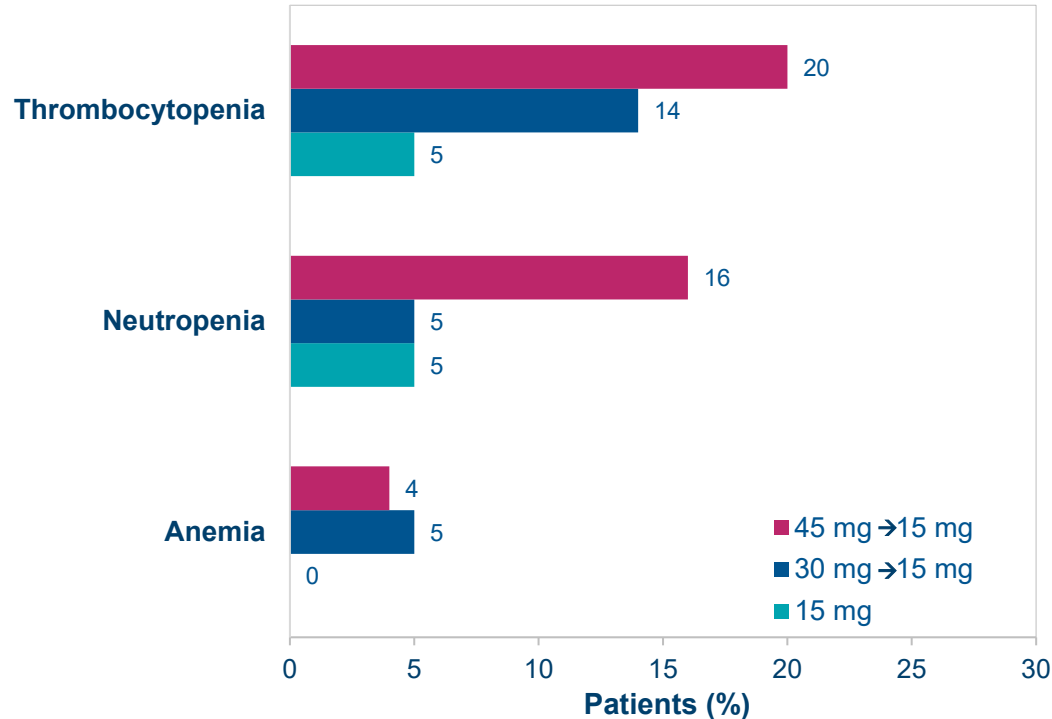
^aIncludes deaths that occurred up to 30 days after the last ponatinib dose; ^bAll TEAEs with “drug withdrawn” as the action taken

- The incidence of TEAEs was comparable across mutation status and dosing cohorts

The most common hematologic grade ≥ 3 TEAEs were thrombocytopenia, neutropenia, and anemia

Hematologic grade ≥ 3 TEAEs

T315I mutation



- Thrombocytopenia occurred in 20% of patients in the 45-mg cohort, 14% of patients in the 30-mg cohort, and 5% of patients in the 15-mg cohort

Rates of TE-AOEs were low across dosing cohorts in patients with the T315I mutation

TE-AOEs	T315I mutation		
	45 mg→ 15 mg (N=25)	30 mg→ 15 mg (N=21)	15 mg (N=21)
TE-AOEs, n (%)			
Any TE-AOE	2 (8)	3 (14)	1 (5)
Grade 3–4	1 (4)	3 (14)	1 (5)
Grade 5	0	0	0
Dose modifications, n (%)			
Discontinuation	0	1 (5)	0
Reduction	0	2 (10)	0
Interruption	1 (4)	2 (10)	1 (5)
Exposure-adjusted AOEs, patients with events/100 PY, % (95% CI)	2.37 (0.00–5.74)	7.32 (0.00–15.64)	2.83 (0.00–7.99)

- Rates of TE-AOEs were generally low across dosing cohorts regardless of mutation status, and there were no deaths due to TE-AOEs

Conclusions

- These results from this post hoc analysis of the 4-year follow-up of the OPTIC study support ponatinib's long-term efficacy and manageable safety profile in patients with the difficult-to-treat T315I mutation
 - In the 45-mg cohort, 64% of patients with the T315I mutation achieved $\leq 1\%$ *BCR::ABL1*^{IS} (MR2) response with a low rate of discontinuations (8%) due to TEAEs
- Although this post hoc analysis had smaller numbers of patients in the mutation and dosing cohorts, these results in patients with CP-CML with the T315I mutation appear consistent with previous analyses of the OPTIC trial¹
- Response-based dosing with ponatinib demonstrated long-term manageable safety, including a low rate of exposure-adjusted AOE of approximately 2% in the 45-mg cohort
- Observed responses were associated with robust long-term survival in patients with CP-CML resistant to second-generation *BCR::ABL1* TKI therapy with or without the T315I mutation; neither PFS nor OS was reached in the 45-mg cohort in patients with the T315I mutation

Acknowledgments

- We thank all the patients and their families, and the investigators and staff at all clinical sites, for their participation in the study
- Thank you for your time and attention!

This study is sponsored by Takeda Development Center Americas, Inc. Medical writing support for the development of this poster, under the direction of the authors, was provided by Corey Burgin, PhD of Peloton Advantage, LLC, an OPEN Health company, and funded by Takeda Development Center Americas, Inc., Lexington, MA, and complied with the Good Publication Practice (GPP) guidelines (DeTora LM, et al. Ann Intern Med 2022;175:1298-1304).



For an e-Print, scan this QR code.

Copies of this presentation obtained through QR (Quick Response) and/or text key codes are for personal use only and may not be reproduced without written permission of the authors.